



# Testing Services

## Testing Services

Student Affairs

Family and Food Sciences, Room 110

559.278.2457 • FAX: 559.278.3583

Linda Enschede, *Test Officer/Coordinator*

[www.csufresno.edu/testing](http://www.csufresno.edu/testing)

### Testing Services

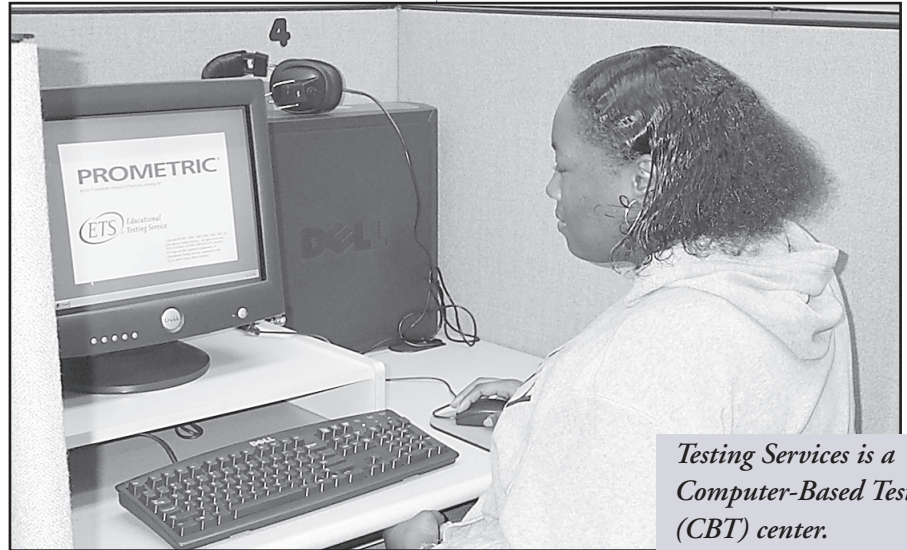
Test taking is very much a part of student life on a university campus. The overall goal of the Office of Testing Services is to provide students and the university with information that will help those involved make sound academic decisions. Towards that end, the office coordinates and administers a wide variety of standardized tests as well as maintains a supply of bulletins for them. These include tests used for admission to colleges, universities, and professional schools; tests for proper placement in English and math classes; tests that assess the writing skills required of graduates of this university; and tests that assess preparation and potential for success in graduate schools and programs.

Also available, on a referral basis from academic or career counselors, are several tests designed to measure career interests and personality characteristics. In addition, the professional staff has expertise in areas of student growth and attribute measurement, program assessment and evaluation, and computer-based analysis of student and faculty surveys.

Testing Services includes a Computer-based Testing (CBT) center, open Monday through Saturday. Anyone needing the Graduate Record Exam (GRE), Test of English as a Foreign Language (TOEFL), PRAXIS, or National Board for Professional Teaching Standards (NBPTS) may call or come in for an appointment to take these tests.

### Undergraduate Entrance Examinations

- The student application for admission to California State University may require scores from the Scholastic Aptitude Test (SAT) or American College Testing (ACT) Program. Though these tests are not routinely administered on this campus at this time, staff members have information about dates and places for them.



*Testing Services is a Computer-Based Testing (CBT) center.*

- The Test of English as a Foreign Language (TOEFL) is usually required for international students seeking admittance to our university. Special institutional TOEFL dates are scheduled each year for students enrolled in our American English Institute (AEI). For non-AEI students, the TOEFL is offered on computer in our Computer-based Testing (CBT) center.

### Undergraduate Required Tests

- The English Placement Test (EPT) and Entry Level Mathematics (ELM) test are given a minimum of eight times each year on our campus. Unless a student has qualified for exception from them, these tests are required for placement into English and math classes the first semester of attendance here.
- The Upper-Division Writing Examination (UDWE) is offered five times each year. Passing this test is one way students may choose to meet the Upper-Division Writing requirement for graduation from this university. Students are eligible to take this exam

and need to take it as soon as they have completed 60 units of coursework including ENGL 5B and 10; taking it before accumulating 90 units is strongly advised.

### Graduate School Testing

Testing Services administers several tests given statewide or nationwide for admission to special programs of study and graduate schools. They include the following:

- Law School Admission Test (LSAT), California Subject Exam for Teachers (CSET), California Basic Educational Skills Test (CBEST), and the PRAXIS — all paper/pencil exams.
- The GRE and TOEFL — all administered only on computer
- Miller Analogies Test (MAT) — a choice of either paper-based or computer-based.

For more information about tests and services, stop by the Office of Testing Services, Family and Food Sciences, Room 110, and ask the people who work with tests the most. ❖