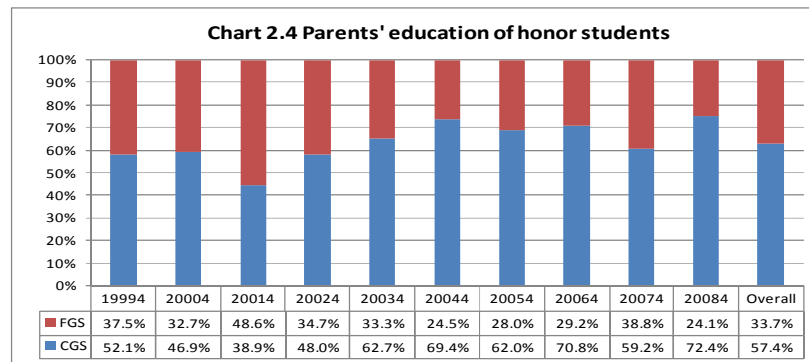
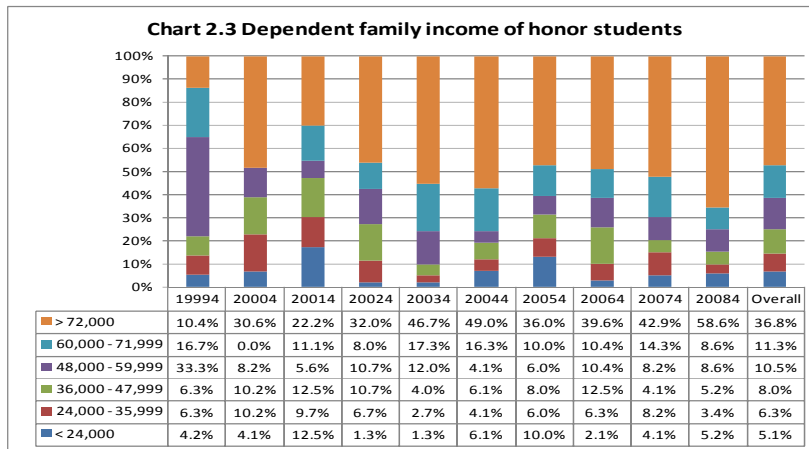
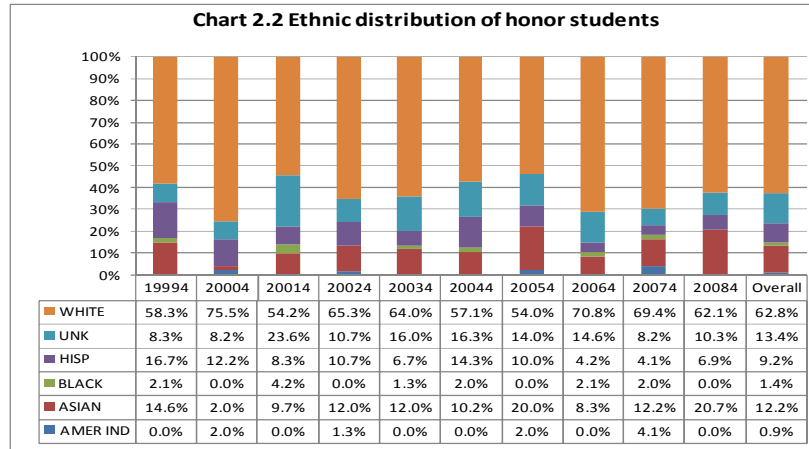
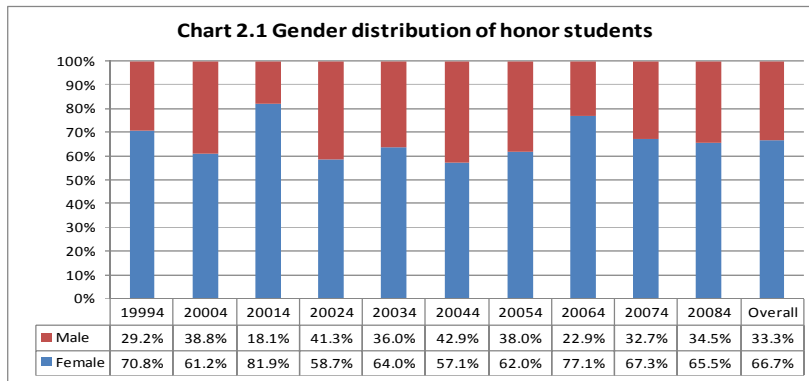
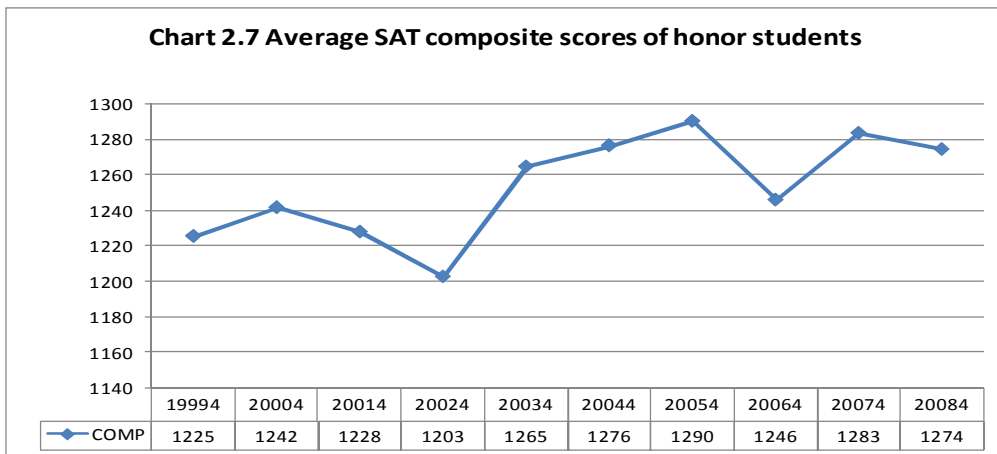
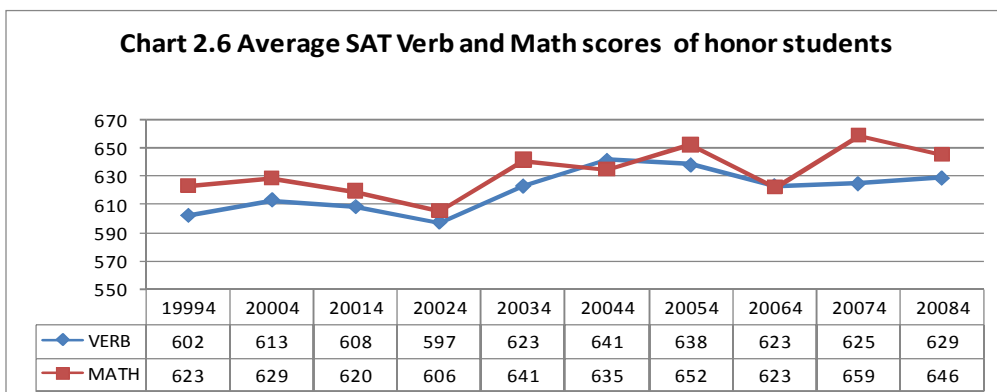
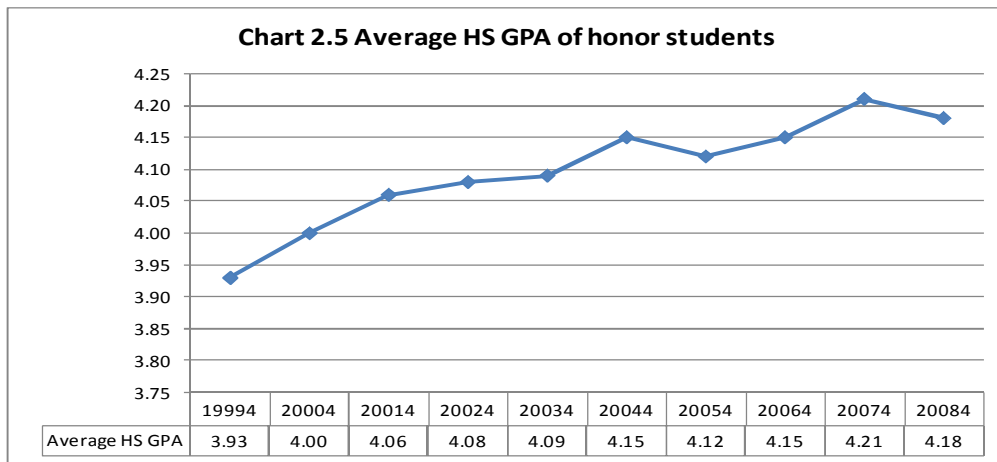


## Appendix - Summary Report of Honors Program Assessment



Note: Students with unknown parents' education are excluded in Chart 2.4.

Appendix - Summary Report of Honors Program Assessment



Appendix - Summary Report of Honors Program Assessment

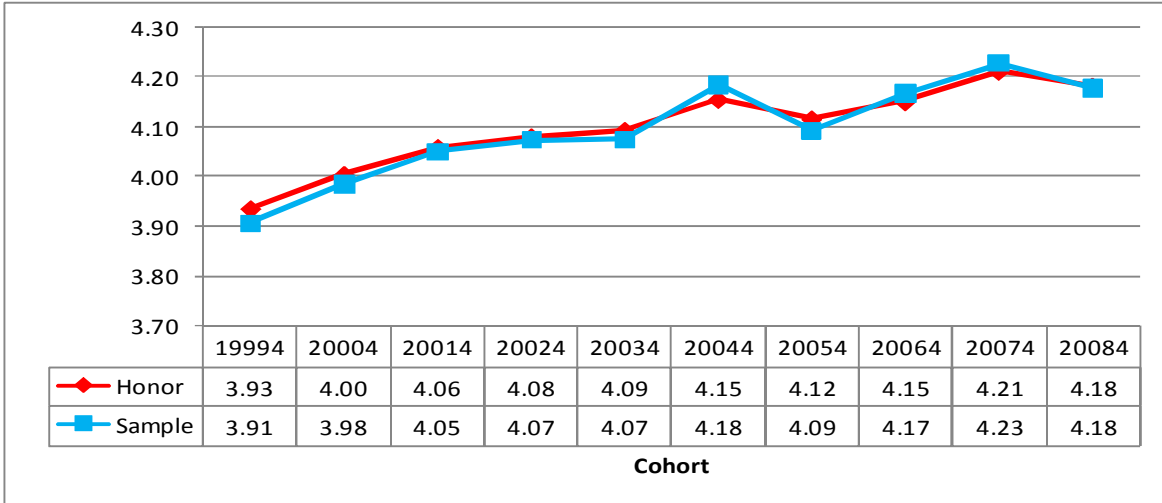
**Table 2.1 Colleges distribution of honor students**

	19994	20004	20014	20024	20034	20044	20054	20064	20074	20084	Grand Total
<b>CAH</b>											
N	4	9	11	15	11	12	5	3	7	12	89
%	8.3%	18.4%	15.3%	20.0%	14.7%	24.5%	10.0%	6.3%	14.3%	20.7%	15.5%
<b>CAST</b>											
N	2	7	2	2	3	2	7	3		6	34
%	4.2%	14.3%	2.8%	2.7%	4.0%	4.1%	14.0%	6.3%	0.0%	10.3%	5.9%
<b>CHHS</b>											
N		1	2	7	6	4	4	6	2	6	38
%	0.0%	2.0%	2.8%	9.3%	8.0%	8.2%	8.0%	12.5%	4.1%	10.3%	6.6%
<b>COE</b>											
N	7	7	3	7	6	8	6	5	8	4	61
%	14.6%	14.3%	4.2%	9.3%	8.0%	16.3%	12.0%	10.4%	16.3%	6.9%	10.6%
<b>COSS</b>											
N	3	6	1	7	5	3		5	1	6	37
%	6.3%	12.2%	1.4%	9.3%	6.7%	6.1%	0.0%	10.4%	2.0%	10.3%	6.5%
<b>CSB</b>											
N	9	5	18	9	13	6	6	4	2	5	77
%	18.8%	10.2%	25.0%	12.0%	17.3%	12.2%	12.0%	8.3%	4.1%	8.6%	13.4%
<b>CSM</b>											
N	13	5	15	9	22	9	11	13	22	16	135
%	27.1%	10.2%	20.8%	12.0%	29.3%	18.4%	22.0%	27.1%	44.9%	27.6%	23.6%
<b>KSOEHD</b>											
N	4	5	8	12		1	1	2	1		34
%	8.3%	10.2%	11.1%	16.0%	0.0%	2.0%	2.0%	4.2%	2.0%	0.0%	5.9%
<b>SPE</b>											
N	6	4	12	7	9	4	10	7	6	3	68
%	12.5%	8.2%	16.7%	9.3%	12.0%	8.2%	20.0%	14.6%	12.2%	5.2%	11.9%
<b>Total N</b>	<b>48</b>	<b>49</b>	<b>72</b>	<b>75</b>	<b>75</b>	<b>49</b>	<b>50</b>	<b>48</b>	<b>49</b>	<b>58</b>	<b>573</b>

**Table 3.1 Sampling schema**

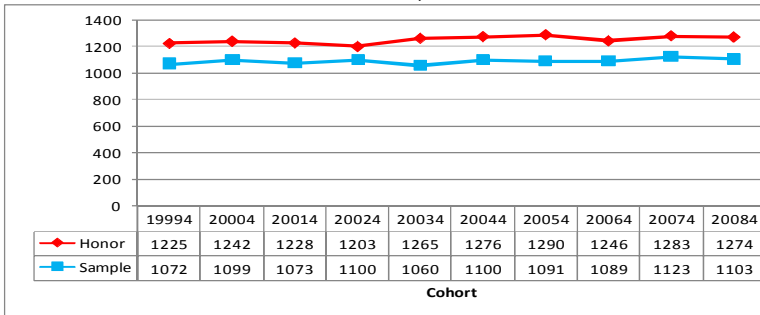
	19994	20004	20014	20024	20034	20044	20054	20064	20074	20084	Total
Honor students	48	49	72	75	75	49	50	48	49	58	573
Non-Honor students	1694	1892	1933	2237	2541	2280	2397	2564	2595	2765	22898
25th percentile of HS GPA for honor students											
	3.97	3.95	3.95	4.00	3.95	4.03	4.00	4.02	4.13	4.11	
Sampling pool (Non-honor students with HS GPA >= 25th percentile of HS GPA for honor students)											
	75	107	150	115	164	105	144	142	81	91	1174
Sampled students (students randomly selected from the sampling pool for each cohort)											
	50	50	80	80	80	50	50	50	50	60	600

**Chart 3.1 HS GPA between honor and sample students**



# Appendix - Summary Report of Honors Program Assessment

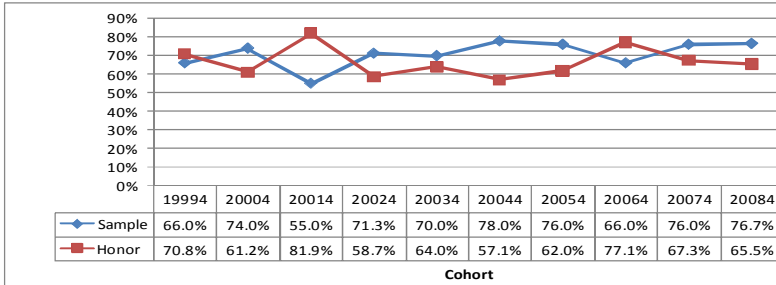
Chart 3.2 SAT Composite Scores



Findings

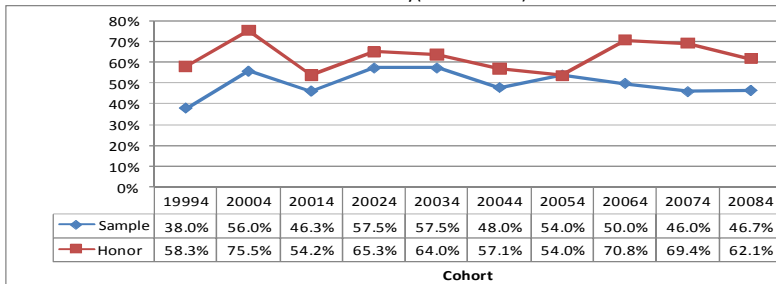
Honor students higher SAT Comp scores over years. But the differences are very stable over years. The pattern is also true for SAT\_Verb and SAT\_Math.

Chart 3.3 Gender (% of female)



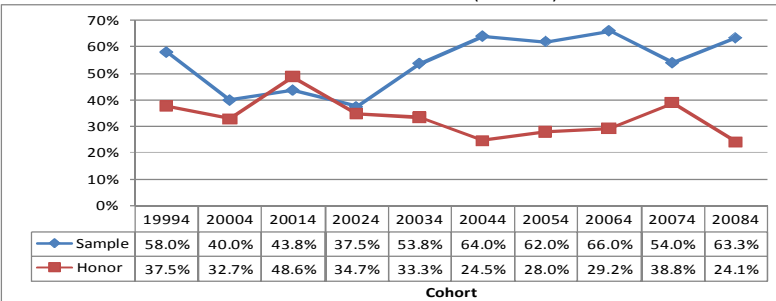
Exists the differences in gender. However, the major students are female for both groups

Chart 3.4 Ethnicity(% of Whites)



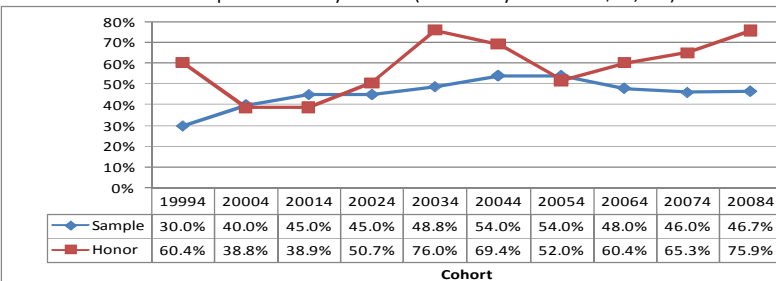
Honor students have more Whites over years.

Chart 3.5 Parents' education (% of FGS)



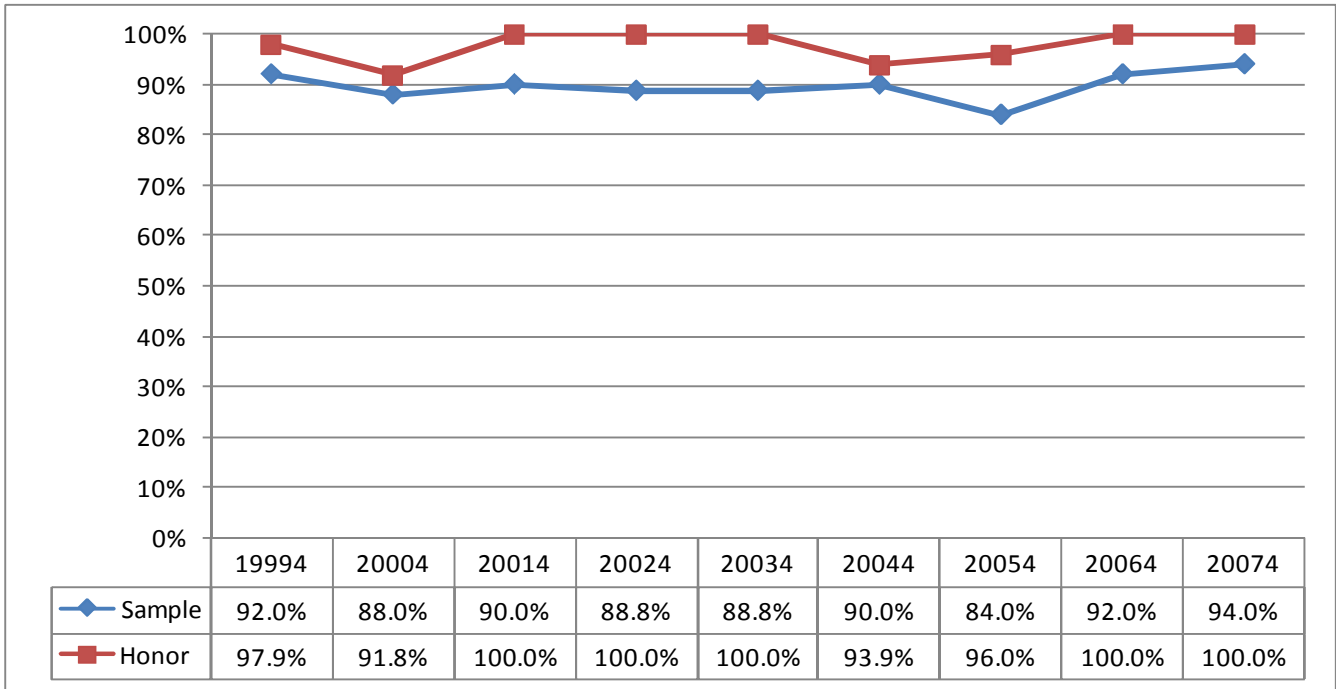
Honor students have lower percentages of FGS for most cohorts.

Chart 3.6 Dependent family income (% of family income >=\$48,000)



Honor students have higher family income in most cohorts.

**Chart 4.1 Retention rates**



**Findings**

Honor students constantly have higher retention rates than sample students over years.

Appendix - Summary Report of Honors Program Assessment

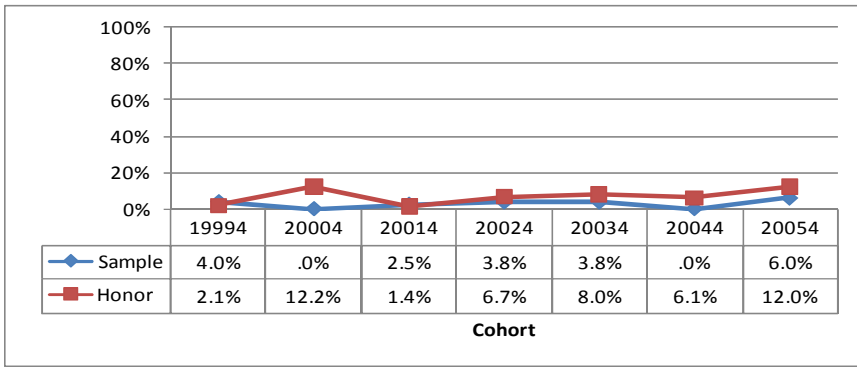


Chart 5.2 4-Year graduation rates

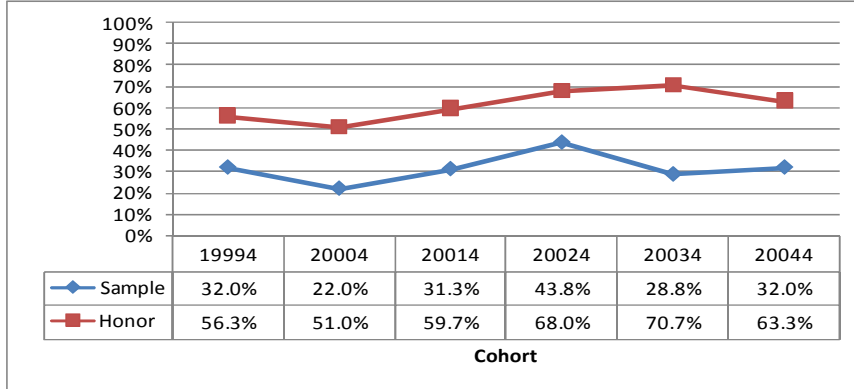


Chart 5.3 5-Year graduation rates

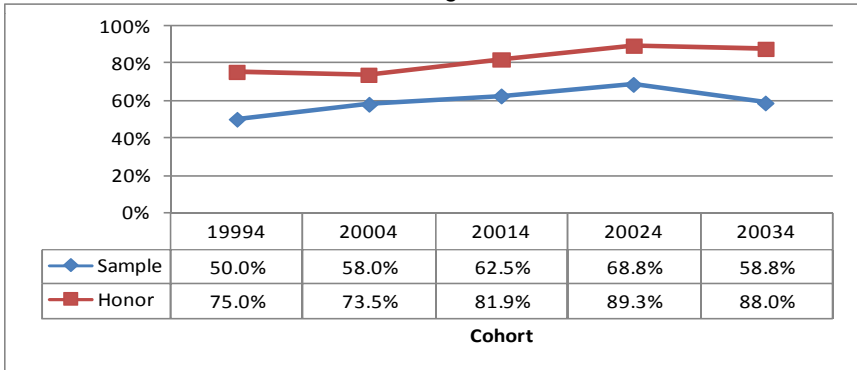
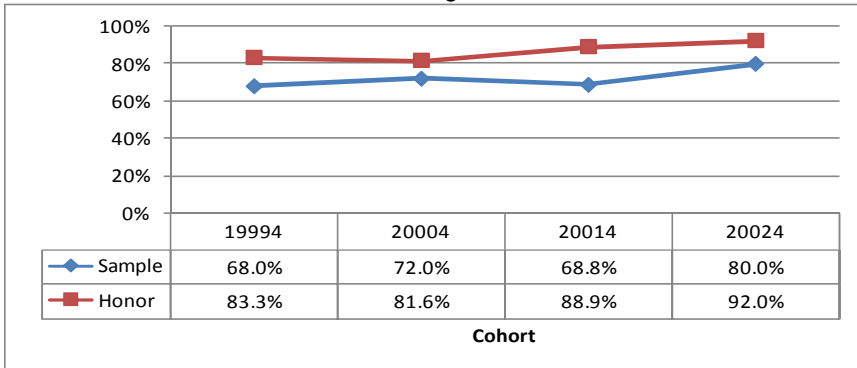
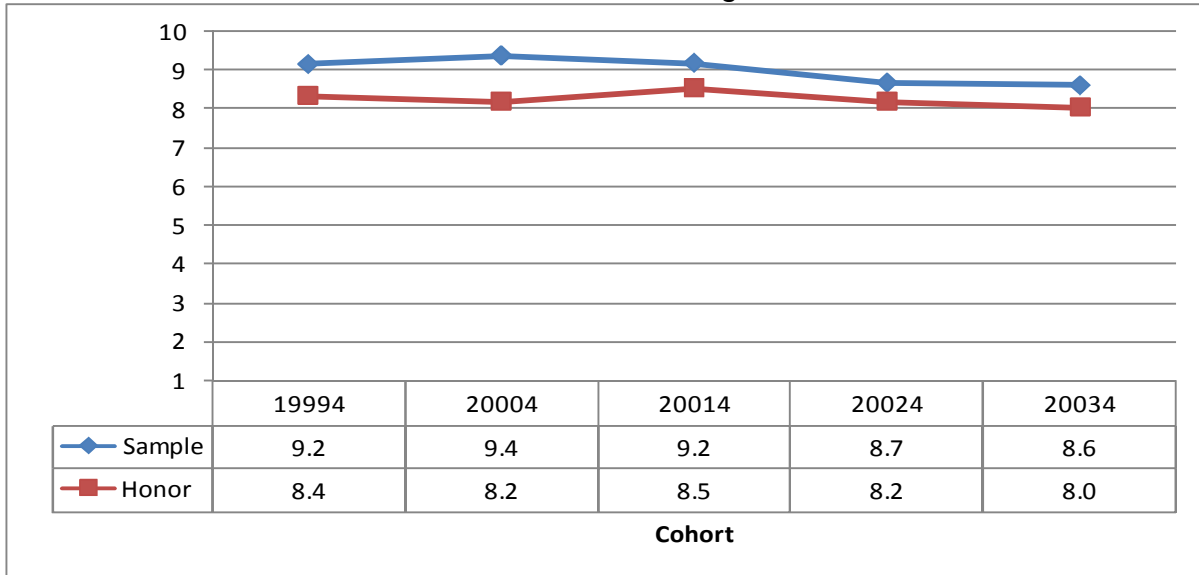


Chart 5.4 6-Year graduation rates



For both groups of students, only a few students graduated in 3 years. However, honor students have much higher 4-year and five-year graduation rates than sample students.

Chart 5.5 Time to degree\*



\* Time to degree refers to the number of terms enrolled between the entry term and graduation term. The summer session is counted as 0.5 and the fall/spring term is counted as 1. The table only includes the data for the first five cohorts.

**Findings**

Honor students constantly have shorter time (about one Fall or Spring terms) to receive their bachelor's degrees than sample students.

















