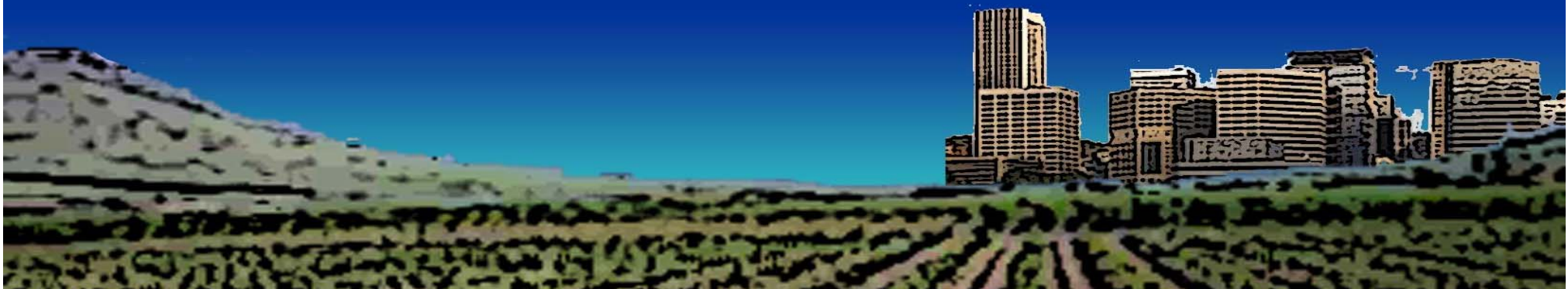




Social Welfare Evaluation, Research & Training Center

California State University, Fresno

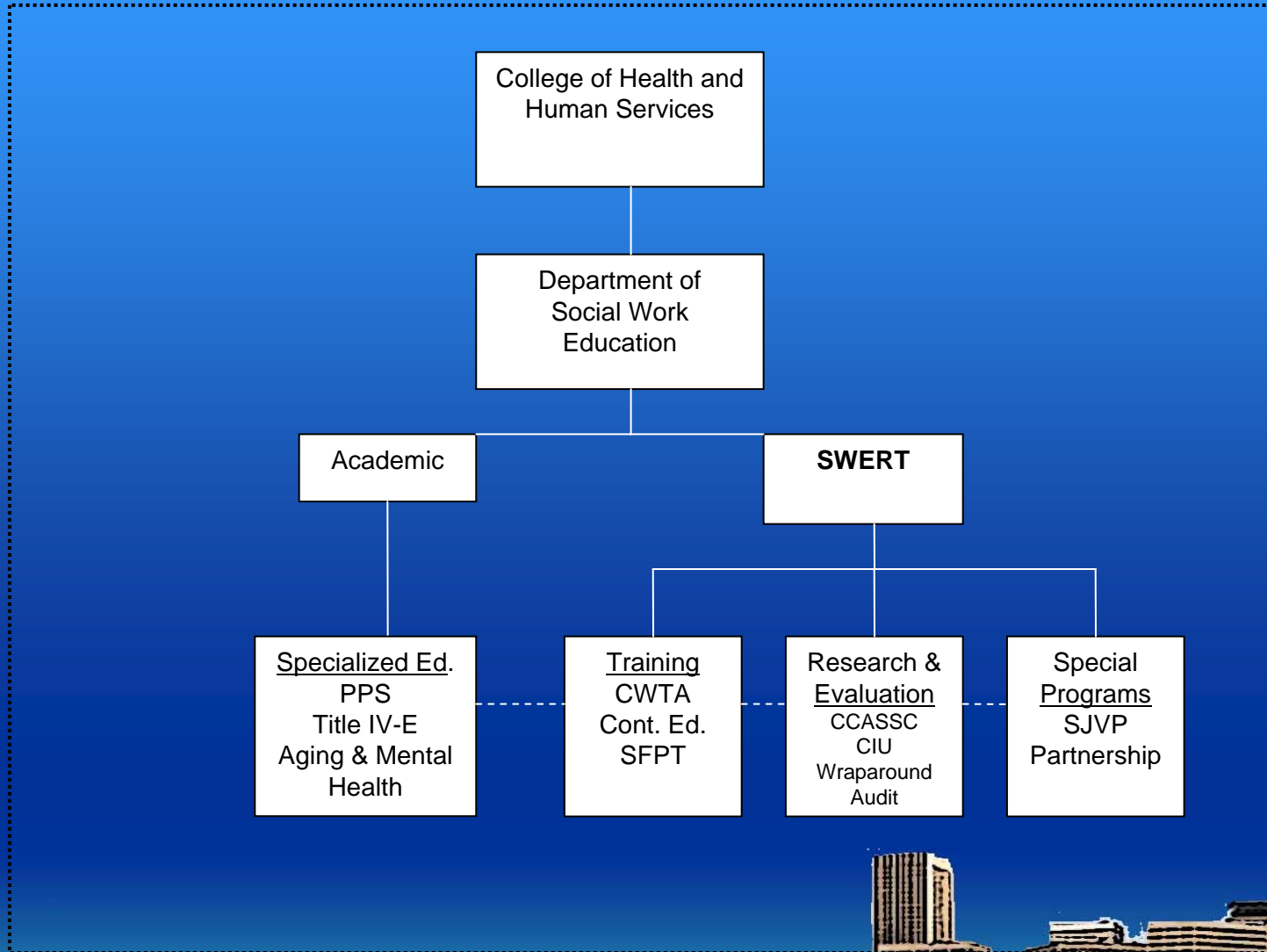


SWERT Activities

- **Established in November 2005, as an ancillary unit of CSU Fresno**
- **Conducts program evaluation, research, and training in the field of human services**
- **Focuses on understanding social welfare conditions and needs in Central California.**
- **Engaged in public service projects and programs:**
 - Adult protective services issues
 - Specialized Foster Parent Training
 - Central California Area Social Services Consortium
 - Claims Integrity Unit
 - Most recent projects: aging, wraparound and mental health services evaluation, State briefings



Central California Social Welfare Evaluation, Research, and Training Center
(SWERT)
Organizational Structural and Functions



SWERT Partners

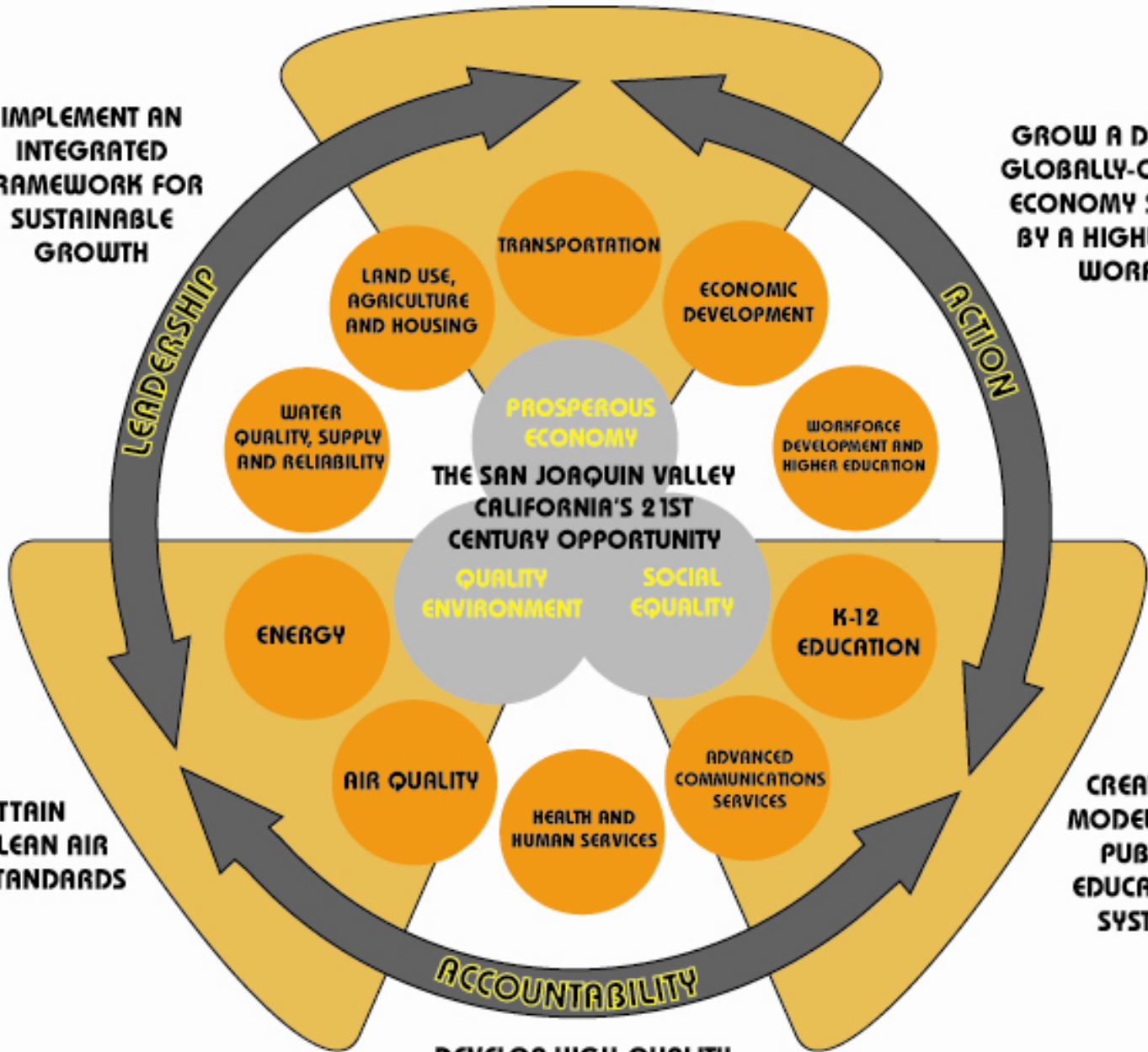
- **Central California Area Social Services Consortium :** Social Services Directors from Valley and Central Coast counties, and CSU Valley campuses.
- **Title IVE Child Welfare Programs:** stipend program, evidence-based practices research and training.
- **Children and Family Policy Institute of California:** collaborative research and training.



**BUILD A 21 CENTURY
TRANSPORTATION MOBILITY SYSTEM**

**IMPLEMENT AN
INTEGRATED
FRAMEWORK FOR
SUSTAINABLE
GROWTH**

**GROW A DIVERSIFIED,
GLOBALLY-COMPETITIVE
ECONOMY SUPPORTED
BY A HIGHLY-SKILLED
WORKFORCE**



**ATTAIN
CLEAN AIR
STANDARDS**

**CREATE A
MODEL K-12
PUBLIC
EDUCATION
SYSTEM**

**DEVELOP HIGH-QUALITY
HEALTH AND HUMAN
SERVICES**

California Partnership for the San Joaquin Valley

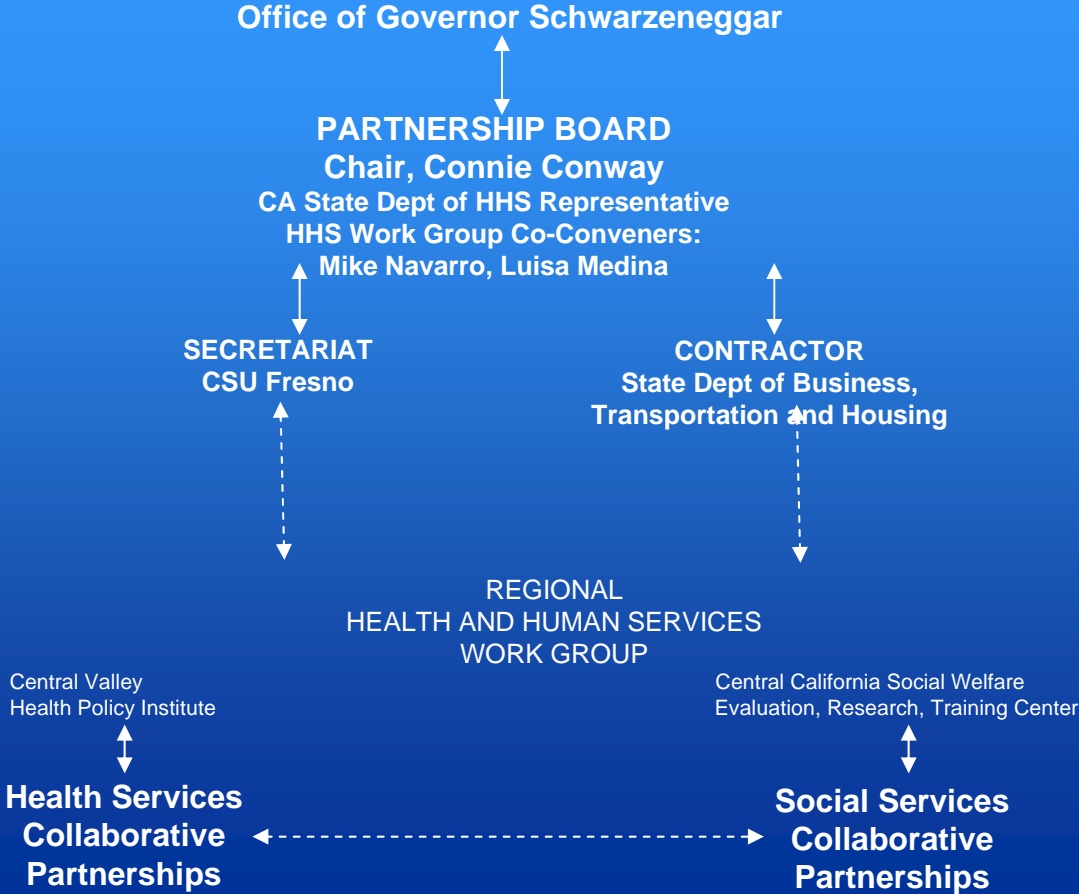
- June 2005, Governor's Executive Order
- Ten work groups (www.bth.ca.gov/capartnership/sanjoaquinvalley.asp)
- Secretariat - CSU Fresno Office of Community and Economic Development, and Great Valley Center, Modesto.
- **The Health and Human Services Work Group:**
 - Health Care - Central Valley Health Policy Institute
 - Social Services - Central California Social Welfare Evaluation, Research and Training Center

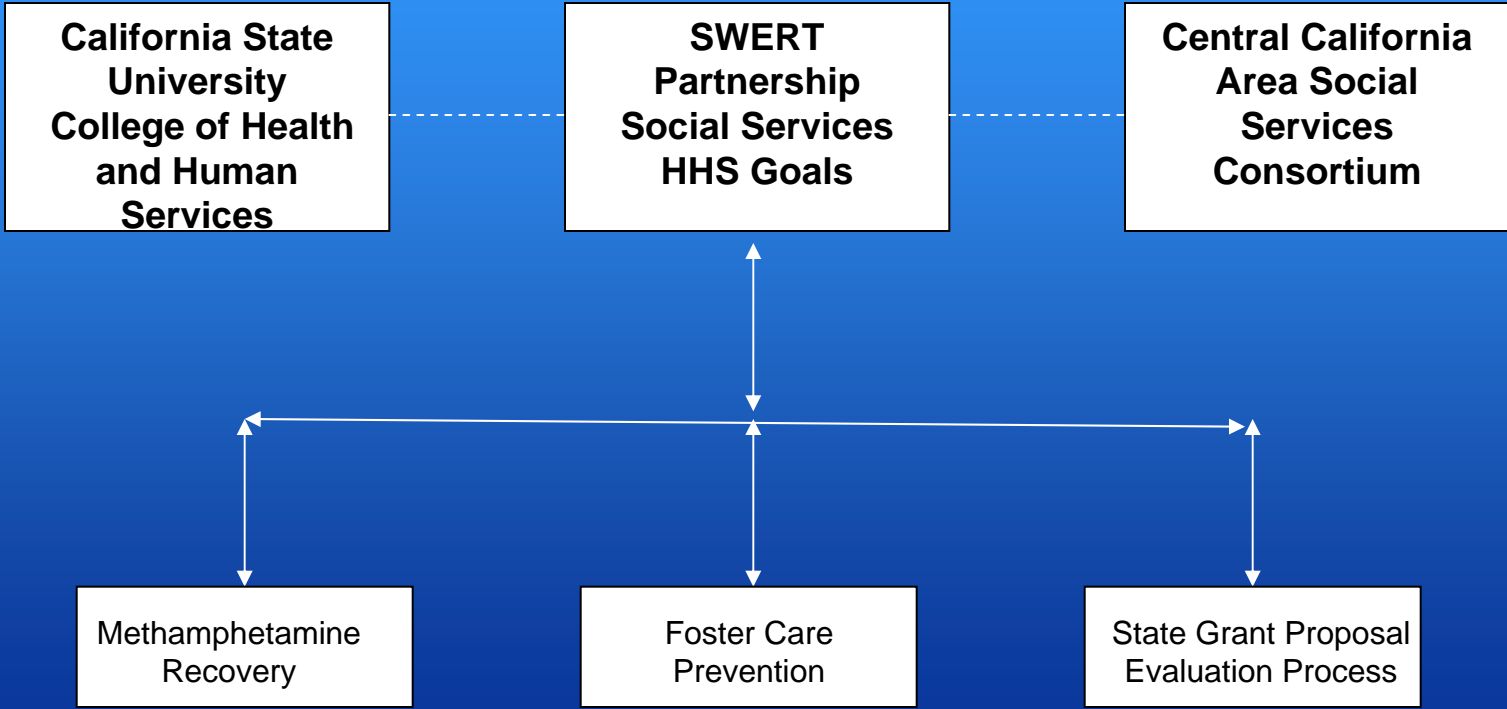


SWERT
and the
California Partnership
for the
San Joaquin Valley



CALIFORNIA PARTNERSHIP HEALTH AND HUMAN SERVICES WORK GROUP STRUCTURE





Comprehensive Methamphetamine Education, Prevention, Recovery and Treatment

Expanding capacity for effective services



Project Funding

- HHS Work Group, Social Services = \$45,000 2/01/07 through 12/31/08
- Seed Grant Funding, Methamphetamine Recovery = \$125,000 7/01/07 through 12/31/08
- Partial support for long-term planning, including resources for sustainable services



Local Solutions to Regional Issues

VISION:

- San Joaquin Valley residents free from the consequences of methamphetamine and other substance abuse

OBJECTIVES:

- Regional Advisory Council
- Community Collaborative Partnership
- Outreach Plan and County-specific information
- Consensus on effective recovery-focused models
- Technical assistance to support local efforts
- Funding sources for prevention through long-term recovery
- Periodic progress evaluation and annual reporting



Desired Meeting Outcome

- Advisory Council, 3-4 representatives per county, public, community, and consumers or family members.
 - Commit to serving for 18 months.
 - Develop and oversee a work plan for expanding local services throughout the region.
 - Set tasks and recruit community collaborative partners;
 - Coordinate task group activities;
 - Approve final reports, local, state, and federal.

